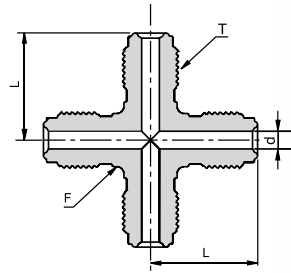
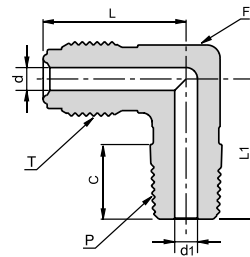


CU

CROSS UNION

Ordering Information	Face Seal Size	L		d		F	T
	inch	mm	inch	mm	inch	inch	Thread Size
P-CU-1/4	1/4	27.2	1.07	4.6	0.18	1/2	9/16-18
P-CU-1/2	1/2	36.8	1.45	10.2	0.40	13/16	7/8-14

EM

MALE ELBOW

Ordering Information	Face Seal Size	L		L1		C		d		d1		F	T	P
	inch	mm	inch	mm	inch	mm	inch	mm	inch	mm	inch	inch	Thread Size	NPT-M
P-EM-1/4 X 1/8	1/4	27.2	1.07	22.1	0.87	9.6	0.38	4.6	0.18	4.6	0.18	1/2	9/16-18	1/8
P-EM-1/4 X 1/4	1/4	27.2	1.07	26.7	1.05	14.2	0.56	4.6	0.18	4.6	0.18	1/2	9/16-18	1/4
P-EM-1/4 X 1/2	1/4	31.2	1.45	33.5	1.26	19.0	0.56	4.6	0.40	9.5	0.37	13/16	9/16-18	1/2
P-EM-1/2 X 1/4	1/2	36.8	1.23	32.0	1.32	14.2	0.75	10.2	0.18	4.6	0.40	13/16	7/8-14	1/4
P-EM-1/2 X 3/8	1/2	36.8	1.45	32.0	1.26	14.2	0.56	10.2	0.40	9.5	0.37	13/16	7/8-14	3/8
P-EM-1/2 X 1/2	1/2	36.8	1.45	36.8	1.45	19.0	0.75	10.2	0.40	10.2	0.40	13/16	7/8-14	1/2

Dimensions are for reference only, and are subject to change without notice.
When ordering, be sure to add the Surface-Finish Designator (either H or E) to the Part Number. (See Material Table, page 157).